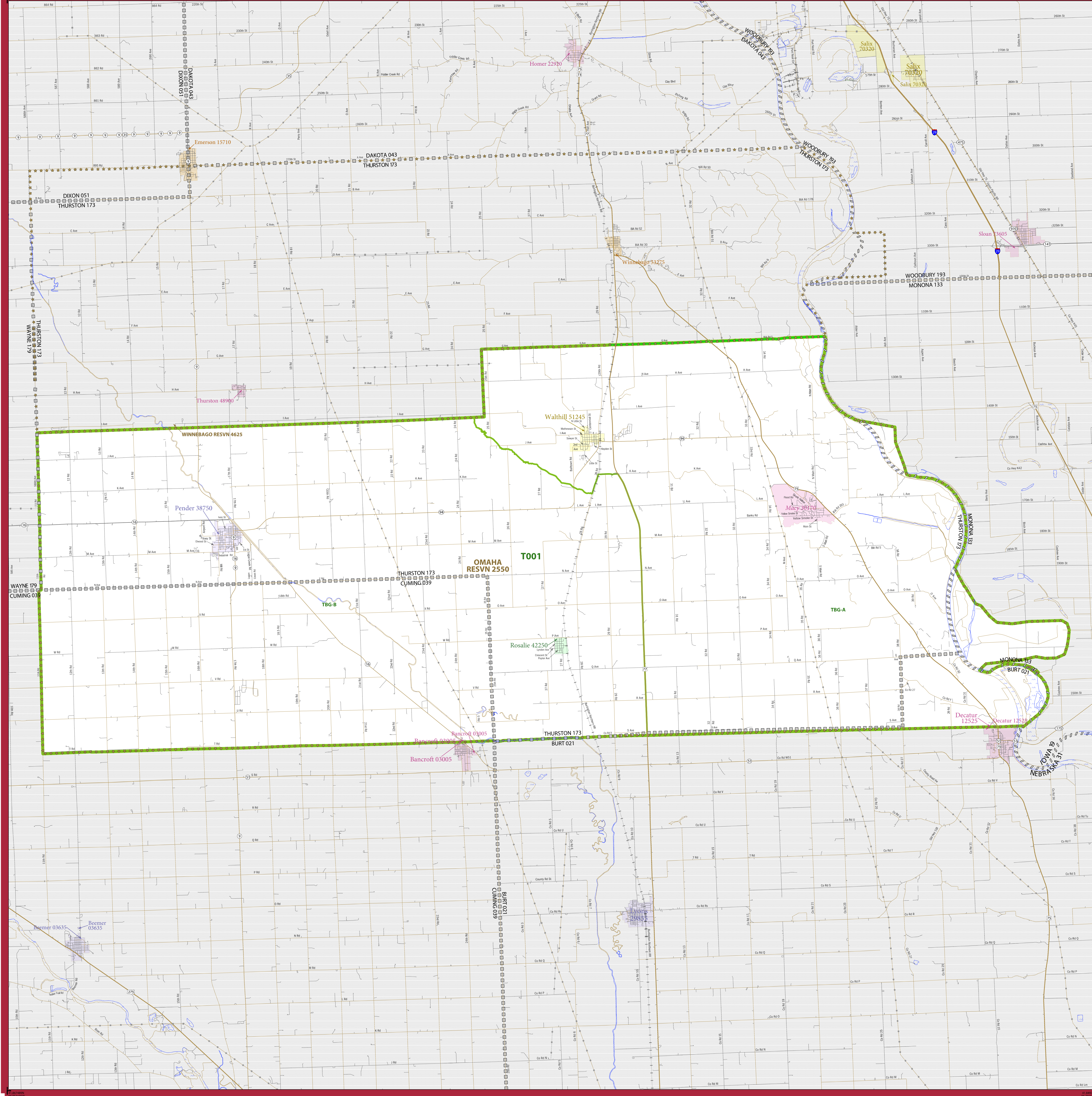


2010 CENSUS - TRIBAL TRACT REFERENCE MAP: Omaha Reservation



LEGEND

SYMBOL DESCRIPTION	SYMBOL	SYMBOL	SYMBOL	SYMBOL	SYMBOL
International	☆☆☆☆☆	CANADA	☆☆☆☆☆	L'ANSE RESVN 1880	
Federal American Indian Reservation	☆☆☆☆☆	T1880	☆☆☆☆☆	KAW OTSA 5690	
Off-Reservation Trust Land, Hawaiian Home Land	+++++	EAGLE NEST DIST 200	◆◆◆◆◆	Tama Resvn 9400	
Oklahoma Tribal Statistical Area, Alaska Native Village Statistical Area, Tribal Designated Statistical Area	◆◆◆◆◆	Lumbee SDTSA 9815	◆◆◆◆◆	NANA ANRC 52120	
American Indian Tribal Subdivision	◆◆◆◆◆	NEW YORK 36	◆◆◆◆◆	MONTGOMERY 031	
State American Indian Reservation	◆◆◆◆◆	Bristol town 07485	◆◆◆◆◆	MILFORD 47500	
State Designated Tribal Statistical Area	◆◆◆◆◆	Davis 18100	◆◆◆◆◆	Incline Village 35100	
Alaska Native Regional Corporation	◆◆◆◆◆	T001	◆◆◆◆◆	TBG-A	
State (or statistically equivalent entity)	◆◆◆◆◆				
County (or statistically equivalent entity)	◆◆◆◆◆				
Minor Civil Division (MCD) 1	◆◆◆◆◆				
Consolidated City	◆◆◆◆◆				
Incorporated Place 1,3	◆◆◆◆◆				
Census Designated Place (CDP) 3	◆◆◆◆◆				
Tribal Census Tract	◆◆◆◆◆				
Tribal Block Group	◆◆◆◆◆				

DESCRIPTION	SYMBOL	DESCRIPTION	SYMBOL
Interstate	— 4 —	Water Body	— Blue —
U.S. Highway	— 2 —	Swamp, Marsh, or Gravel Pit/Quarry	— Blue/White —
State Highway	— 0 —	Glacier	— Blue/White —
Other Road	— Road —	Military	— Blue/White —
AWT Trail, Stairway, Alley, Walkway, or Ferry	— Road —	National or State Park, Forest, or Recreation Area	— Blue/White —
Railroad	— RR —	Inset Area	— Blue/White —
Pipeline or Power Line	— Line —	Outside Subject Area	— Blue/White —
Ridge or Fence	— Line —		
Property Line	— Line —		
Nonstatistical Boundary or Feature Not Elsewhere Classified	— Line —		

Where state, county, and/or MCD boundaries coincide, the map shows the boundary symbol for only the highest-ranking of these boundaries. Where American Indian reservation and American Indian tribal subdivision boundaries coincide, the map shows only the American Indian reservation boundaries.

1 A * following an MCD name denotes a false MCD. A * following a place name indicates that a false MCD exists with the same name and FIPS code as the place; the false MCD label is not shown.

2 MCD boundaries are shown in the following states in which MCDs have functioning governments: Connecticut, Maine, Massachusetts, Michigan, Minnesota, New Hampshire, New Jersey, New York, Pennsylvania, Rhode Island, Vermont, and Wisconsin.

3 Place label color corresponds to the place fill color.

SUBJECT AREA RELATED COUNTIES ON MAP SHEET
 19133 Monona
 31173 Thurston
 31021 Burt
 31039 Cuming

All legal boundaries and names are as of January 1, 2010. The boundaries shown on this map are for Census Bureau statistical data collection and tabulation purposes only; their depiction and designation for statistical purposes does not constitute a determination of jurisdictional authority or rights of ownership or entitlement.

Geographic Vintage: 2010 Census (reference date: January 1, 2010)
 Data Source: U.S. Census Bureau's MA7/TIGER database (TAB10)
 Map Created by Geography Division: August 20, 2011

U.S. DEPARTMENT OF COMMERCE Economics and Statistics Administration U.S. Census Bureau

Projection: Albers Equal Area Conic
 Datum: NAD83
 Spheroid: GRS 80
 1st Standard Parallel: 40 30 01
 2nd Standard Parallel: 42 30 05
 Central Meridian: 99 40 49
 Latitude of Projection's Origin: 40 00 00
 False Easting: 0
 False Northing: 0

The plotted map scale is 1:74126

United States Census Bureau

PARENT SHEET 1
 Total Sheets: 1
 Index Sheets: 0
 Parent Sheets: 1
 Inset Sheets: 0

NAME: Omaha Reservation (2550)
 ENTITY TYPE: American Indian Reservation (Federally Recognized)
 RELATED ST: Iowa (19), Nebraska (31)
 TRIBE NAME: Omaha Tribe (TR0168)

2010 Tribal Tract Ref Map (PARENT)
 2/06/2010/001